

## FastFinish Pro Texture Sprayer

*For Water-Based Materials Only.*

3A7016A - EN

### **WARNING**



**Read Operation manual 3A5725 for complete instructions and warnings.**  
Manuals are available by calling Graco at 1-800-690-2894, or at [www.graco.com](http://www.graco.com).  
For Technical Assistance call 1.800.543.0339

This Quick Guide is not a substitute for reading and understanding all operation manuals and warning labels supplied with the equipment. It is important that you read and understand all warnings and instructions before operating this equipment.

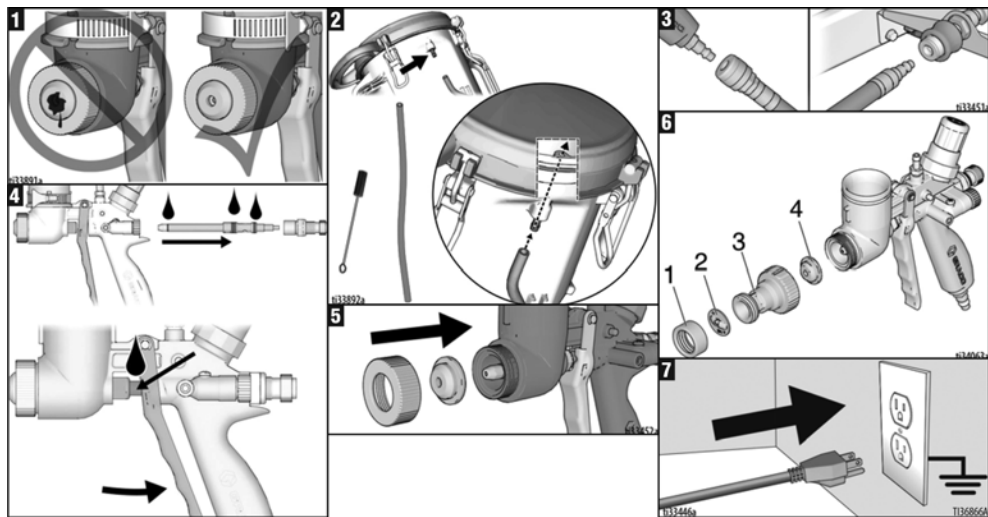


Follow the pressure relief procedure and wear protective equipment including but not limited to protective eye wear.

**FAILURE TO FOLLOW ALL WARNINGS CAN RESULT IN SERIOUS INJURY.**

### SETUP

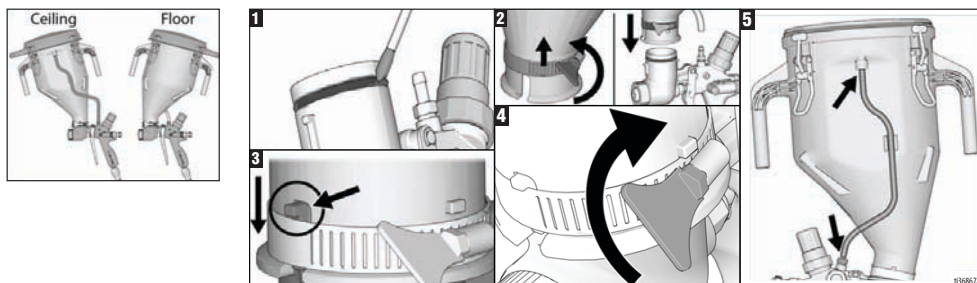
**NOTICE** Do not store spray system under pressure. This may cause damage to the spray system. Do not allow material to dry inside hopper, hose, gun nozzles or spray system. This may cause system to fail.



**Step 1:** Check material nozzle before spraying to ensure there is not an air blockage. **Step 2:** Make sure hopper air passageway and air supply tube are free of debris. Clean before using. **Step 3:** Connect one end of air hose to the compressor air outlet fitting and the other end to the gun air inlet fitting. **Step 4:** Test gun trigger. Lubricate needle seals if necessary. **Step 5:** Install material nozzle on front of gun and secure using retaining ring. Pulling the trigger when installing nozzle makes assembly easier. **Step 6:** If using WideTex adapter, install disc (2) on front of adapter (3) with retaining ring (1). Install a standard nozzle (4) on front of gun with the assembly. Pulling trigger when installing nozzle makes assembly easier. If desired finish is not achieved, try a different size standard nozzle. **Step 7:** Plug power cord into a properly grounded outlet.

## SETUP - MATERIAL HOPPER

When spraying ceilings, the hopper should be tilted forward. When spraying floors, the hopper should be tilted backward. Doing so aids in emptying more texture from the hopper.

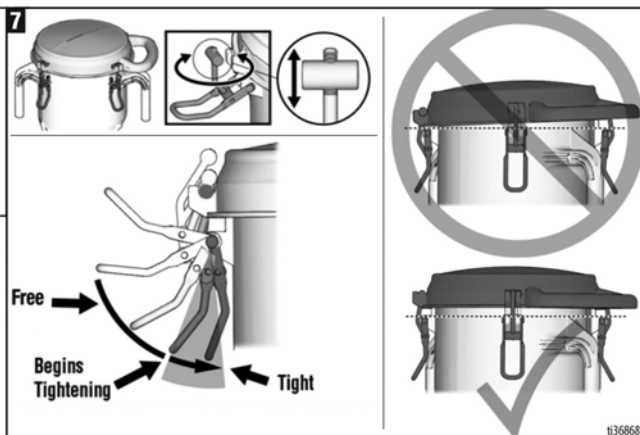


**Step 1:** Apply grease to o-ring to make hopper easier to attach to the gun. **Step 2:** Loosen hopper clamp, slide it over the rib and toward the top of the hopper. **Step 3:** Position hopper outlet over the hopper port on the gun and push hopper down as far as it will go, while slightly rotating. Slide down hopper clamp. **Step 4:** Hand tighten the hopper clamp. **Step 5: Pressurized hopper gun only:** Attach tube from hopper barb to gun barb. Do not clamp air supply tube to barbs. The tube is designed to disconnect if hopper is over-pressurized.



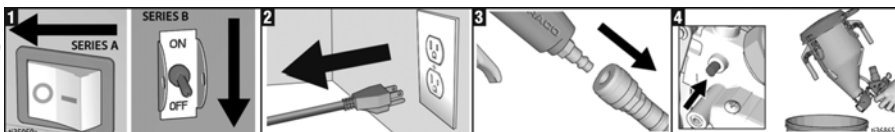
### RUPTURE HAZARD

Over-pressurization can result in hopper rupture and injury. To avoid injury, do not exceed maximum hopper pressure rating. Only pressurize hopper by connecting air supply tube to barbs on hopper and gun. Only use genuine Graco air supply tube 17V945.



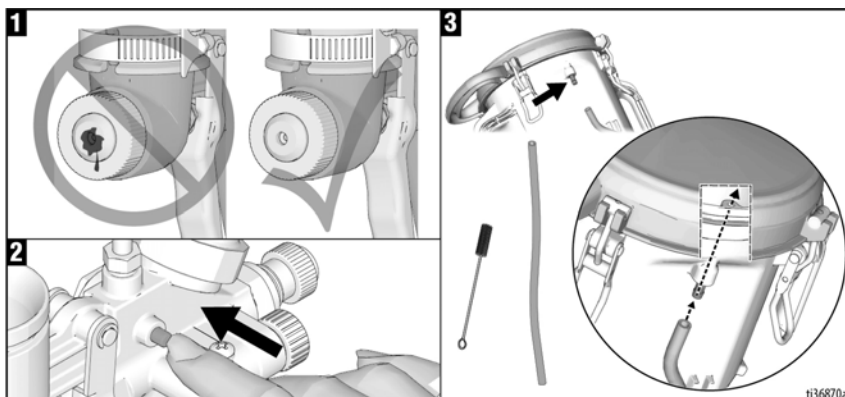
**Step 6:** Apply grease to hopper o-ring to make hopper lid easier to attach to the hopper. **Step 7: Pressurized hopper gun only:** If lid is too loose and leaks air when pressurized, adjust the four lid clamps to tighten lid. **NOTE:** Each clamp should be adjusted equally so the lid sits even on the hopper. **NOTICE:** Over-tightening the lid may damage the hopper and/or hopper lid.

## PRESSURE RELIEF PROCEDURE



**Step 1:** Turn air compressor ON/OFF switch to the **OFF** position. **Step 2:** Unplug power cord. **Step 3:** Disconnect spray gun from air hose. **Step 4:** Open pressure relief valve on gun by pressing button (pressurized gun only). Aim gun into waste bucket and trigger the gun until all air and material pressure is relieved. **NOTICE:** Do not relieve pressure by lifting the hopper clamps. Lifting the clamps while the hopper is pressurized may damage the hopper and/or hopper lid.

# OPERATION (PRESSURIZED HOPPER GUN)

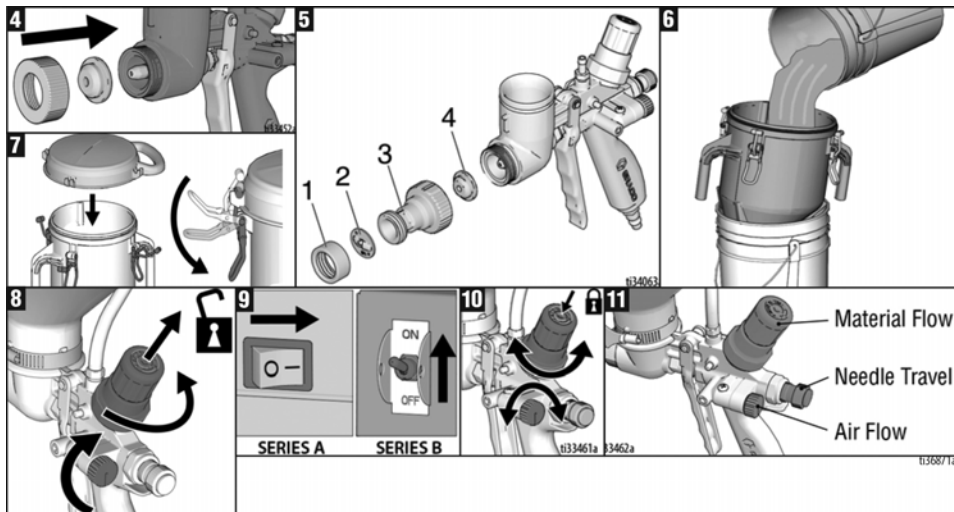


**Step 1:** Check material nozzle before spraying to ensure there is not an air blockage. **Step 2:** Check to make sure air relief valve moves freely when button is pushed. **Step 3:** Make sure hopper air passageway and air supply tube are free of debris. Only use genuine Graco air supply tube 17V945.



## RUPTURE HAZARD

Over-pressurization can result in hopper rupture and injury. The air supply tube is designed to disconnect if hopper is over-pressurized. **To avoid over-pressurized:** Inspect and clean gun tip before use. Do not clamp air supply tube to barbs.



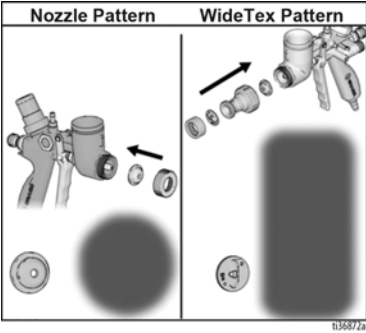
**Step 4:** Install material nozzle. **Step 5:** If using WideTex adapter, install disc (2) on front of adapter (3) with retaining ring (1). Install a standard nozzle (4) on front of gun with the assembly. Pulling trigger when installing nozzle makes assembly easier. If desired finish is not achieved, try a different size standard nozzle.

**Step 6:** Fill hopper with prepared texture material. **Step 7:** Fasten lid. **Step 8:** Pull up on material flow regulator knob to unlock. Completely close the air flow valve by turning the knob clockwise; turn the material flow regulator to the lowest setting counterclockwise. **Step 9:** Turn air compressor power switch ON.

**Step 10:** Adjust air flow valve and material flow regulator on hopper gun for desired texture. Push down on the material flow regulator to lock settings. **NOTICE:** If material gets in needle or gun air passages, flush with water immediately. **Step 11:** To achieve uniform spray pattern, adjust air flow valve, needle travel and material flow regulator. If you do not achieve the desired pattern, change nozzles, or adjust material thickness.

NOZZLE SELECTION CHART

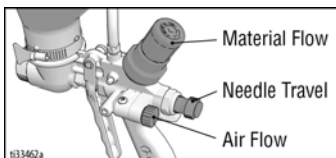
Nozzle			WideTex Disc™			
Application	Nozzle Size <sup>1</sup>	Air Volume <sup>2</sup>	Application	WideTex Disc (standard)	Nozzle (mm)	Air Volume
Simulated Acoustic	6 mm ( <i>fine to medium</i> ) 8 mm ( <i>coarse</i> )	Medium to High	Simulated Acoustic Fine Medium Coarse	W6 W6 W8	4 6 8	High High High
Orange Peel	4 mm 6mm	Medium to High	Fog	W4	4	High
Splatter Coat	6 mm 8 mm	Low to Medium	Orange Peel	W4 or W6	4-8	Medium to High
Knockdown	8 mm	Low	Splatter Coat	W6 or W8	6-8	Low to Medium
<sup>1</sup> For more material volume, try a larger nozzle.			Knockdown	W6 or W8	6-8	Low
<sup>2</sup> Adjust air volume with gun air flow valve.						



## OPERATION - ADJUSTING THE SYSTEM (PRESSURIZED HOPPER GUN ONLY)

Sufficient fluid output (volume and pressure) and good atomization is a balance of atomizing air, material thickness/material flow and nozzle selection. Achieving the correct balance for your application requires experimentation to achieve desired results. Keep in mind these important points when adjusting gun:

- To select correct nozzle for your applications, consider size of aggregate in material and coarseness of spray pattern. Remember the larger the material nozzle, the larger the pattern.
- Set material flow by closing air flow valve, and adjusting material flow regulator, while pulling trigger to get the appropriate material flow.



- Start spray system with air flow valve completely open. If needed, slowly close gun air flow valve until you get the desired spray pattern. Use minimum amount of air at spray gun to achieve proper spray pattern and to minimize bounce back.
  - + Test spray pattern on cardboard. Hold gun 18 to 48 in. (45.7 to 122 cm) from surface. Use this spraying distance for most applications.
  - + When spraying with a material nozzle only, overlap each stroke 50% in a circular motion.
  - + When spraying with a material nozzle and WideTex disc, overlap each stroke 50% in a linear motion.
- Gun air flow is regulated using air flow valve located on the left side of the gun.
  - + Opening air flow valve (counterclockwise) increases air flow through gun.
  - + Closing air flow valve (clockwise) decreases air flow through gun.

### For Less Material Flow

Try one or a combination of these methods:

- Turn material flow regulator knob counterclockwise on gun to decrease material flow.
- Use thicker material mixture.
- Use smaller material nozzle.
- Decrease needle travel.

### For More Material Flow

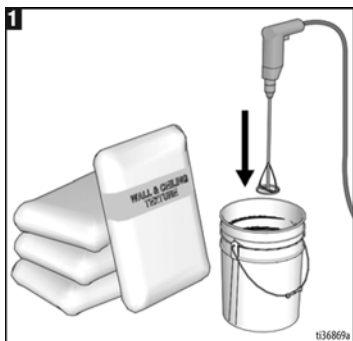
Try one or a combination of these methods:

- Turn material flow regulator knob clockwise on gun to increase material flow.
- Use thinner material mixture.
- Use a larger material nozzle.
- Increase needle travel.

### Check Material Consistency Periodically

Check and thin material as needed to maintain proper consistency. The material may thicken as it sits and slow down production. Agitate periodically.

## MIXING MATERIAL

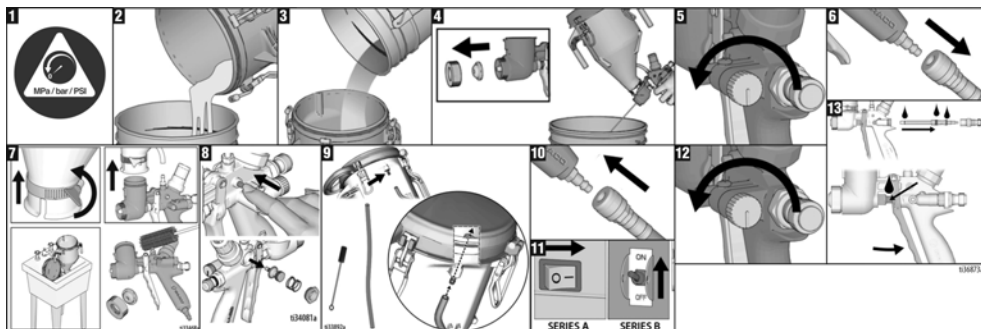


**Step 1:** Mix the material and water in a separate container. **Dry Mix:** Carefully mix texture material and water according to manufacturer instructions on the bag. **Premix:** Slowly add approximately 2 to 6 quarts (1.9 to 5.7 liters) of water to a 5 gallon (18.9 liter) bucket of premix.

**Step 2:** Agitate to mix, using a half-inch, variable speed drill with mixing paddle, to a smooth, lump-free consistency.

**Step 3:** Allow ceiling texture to set for at least 15 minutes. Then remix prior to use.

## CLEANUP



**Step 1:** Perform **Pressure Relief Procedure**. **Step 2:** Drain remaining material into a bucket until most of the texture material is out of hopper. **Step 3:** Fill hopper with clean water. **Step 4:** Remove nozzle from gun. Trigger gun into bucket until most of texture mix is out of the hopper. Allow water to flow through gun until gun is clean. **Step 5:** Open gun air flow valve, allowing air through nozzle to clear out any remaining material.

**Step 6:** Disconnect spray gun from air hose. **Step 7:** Remove hopper gun and finish cleaning all components. A soft brush may be used to help loosen any dried material from the surface. **Step 8:** Check air relief valve. If sticky or contaminated with material, disassemble and clean. Grease o-rings and reassemble. **Step 9:** Clean hopper air passageway and air supply tube. **Step 10:** Connect air hose to gun. **Step 11:** Turn air compressor ON. **Step 12:** Open gun air flow valve to allow air flow through the needle to clear out remaining material. Perform **Pressure Relief Procedure**. **Step 13:** If trigger feels sticky, lubricate needle seals.