

Mark X Electric Airless Sprayers

3A2577A

EN

**For Portable Airless Spraying of Architectural Coatings and Paints.
For professional use only.**

3300 psi (227 bar, 22.7 MPa) Maximum Working Pressure



IMPORTANT SAFETY INSTRUCTIONS

Read all warnings and instructions in the
Operation manual. Save these instructions.

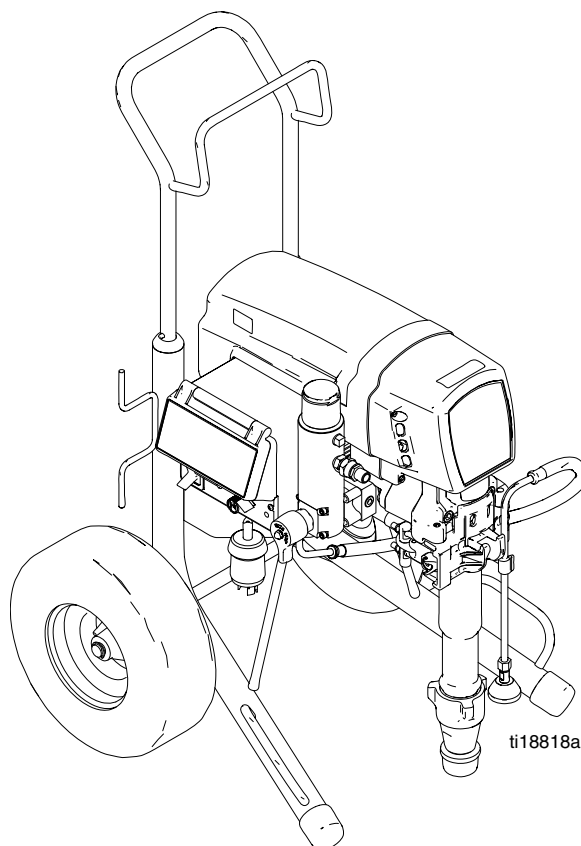
Related Manuals:



3A2575

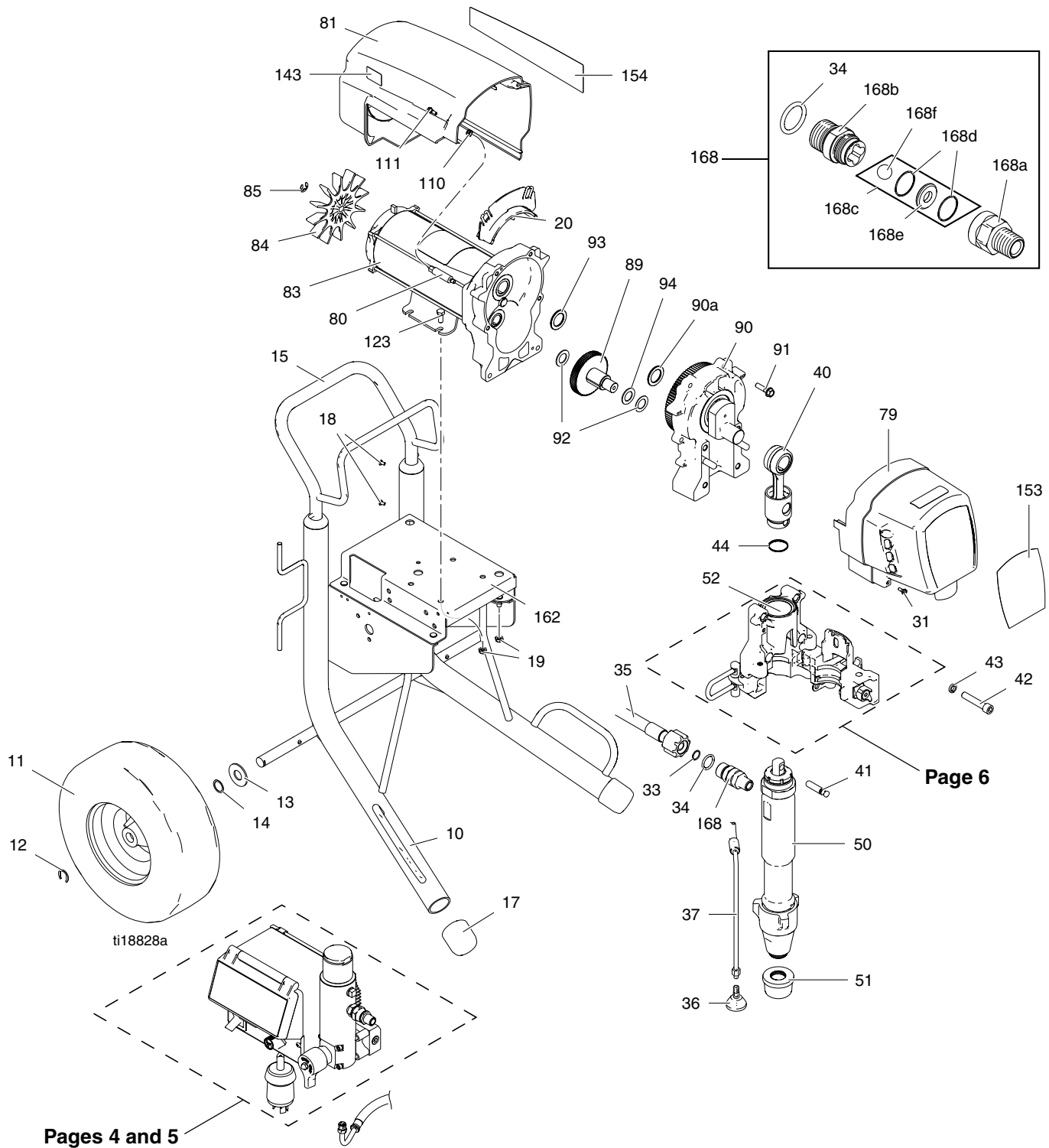


3A2576



Mark X

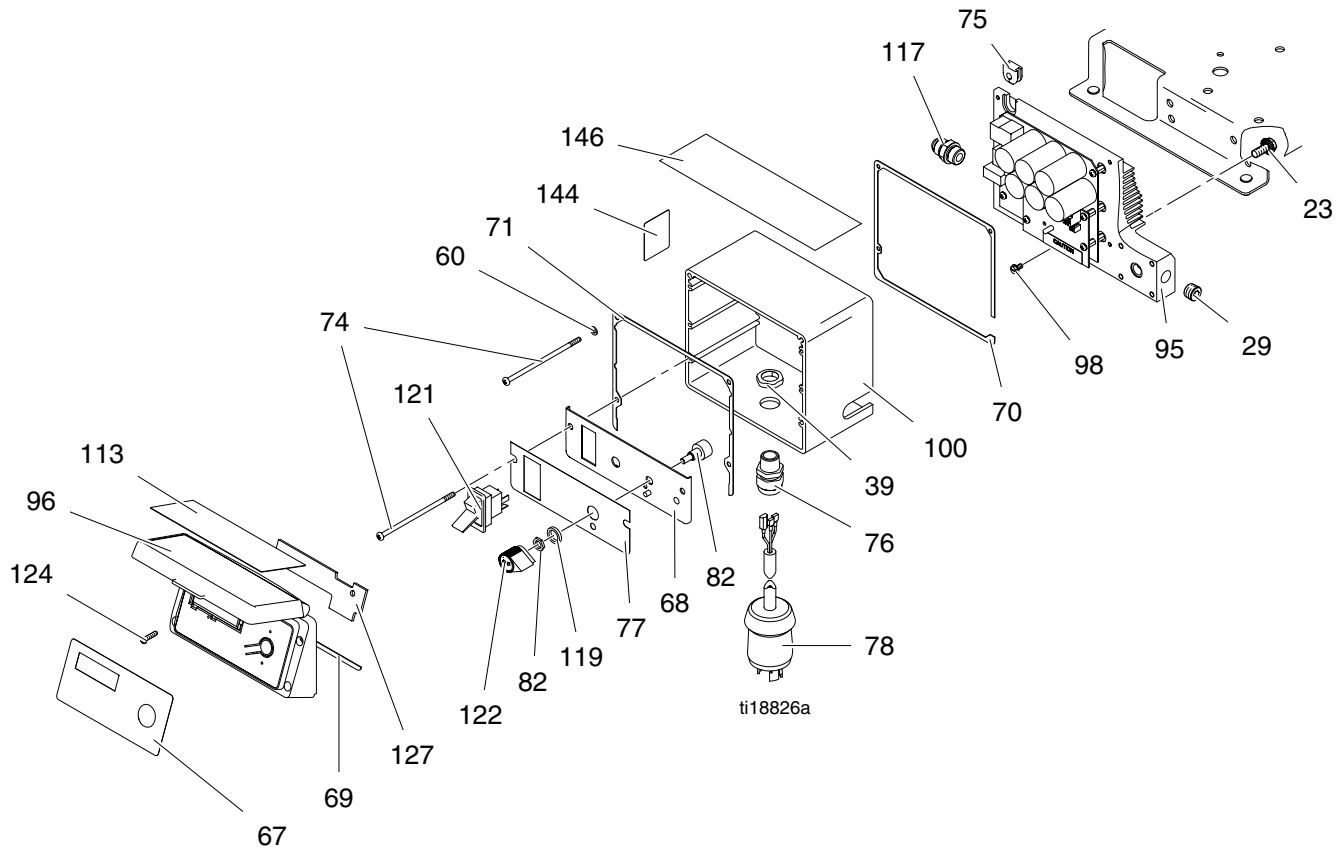
Parts - Mark X Premium



Parts List - Mark X

Ref.	Part	Description	Qty.	Ref.	Part	Description	Qty.
10	288663	FRAME, cart, Mark X	1	83	258909	MOTOR, electric, Mark X, 240V (includes 80, 84, 85)	1
11	119509	WHEEL, pneumatic	2	84	15V577	FAN, motor	1
12	15E891	CLIP, retaining	2	85	122347	RING, retaining, external	1
13	156306	WASHER, flat	2	89	288035	GEAR, combination (includes 92, 94)	1
14	116038	WASHER, wave spring	2	90	287990	HOUSING, drive Mark X (includes 91, 93)	1
15	24A250	HANDLE, assy	1	90a	194173	WASHER	1
17	276974	CAP, leg	2	91	15C753	SCREW, mach, hex wash HD	6
18	108795	SCREW, mach, pnh	4	92	114672	WASHER, thrust	2
19	112746	NUT, lock, nylon, thin pattern	8	93	116192	WASHER, thrust	1
20	278075	BRACKET, wire	1	94	114699	WASHER, thrust	1
31	118444	SCREW, mach, slot hex wash HD	4	110	276980	GROMMET, cover	2
33	109450	PACKING, o-ring	1	111	119250	SCREW, shoulder	2
34	C20195	O-RING	1	123	100057	SCREW, cap, hex HD	4
35	16P256	HOSE, coupled, 1/2 in. (includes 33)	1	143	15Y118	LABEL, Made in the USA	1
36	241920	DEFLECTOR, threaded	1	153	15T301	LABEL, brand, Mark X 230V, front	1
37	287952	HOSE, drain	1	154	15T302	LABEL, brand, Mark X 230V, side	1
40	287473	ROD, connecting (includes 41, 44)	1	162	288899	SHELF, Ultra	1
41	15F097	PIN, pump	1	168	24M611	KIT, check valve (includes 168a - 168f)	1
42	112599	SCREW, cap, socket head	4	168a	16N461	HOUSING, seat, check valve	1
43	112600	WASHER, lock, spring, (hi-collar)	4	168b	16N462	HOUSING, ball, check valve	1
44	119677	SPRING, retaining	1	168c	24M725	KIT, repair, check valve (includes 168d, 168e, 168f, 68)	1
50	258652	PUMP, displacement	1	168d		O-RING	1
51	189920	STRAINER, (1-11 1/2 npsm)	1	168e		SEAT, valve	1
52	287934	HOUSING, bearing	1				
79	287992	COVER, drive (includes 31)	1				
80	15G845	SPACER, standoff	2				
81	287282	SHIELD, motor, painted (includes 110, 111)	1				

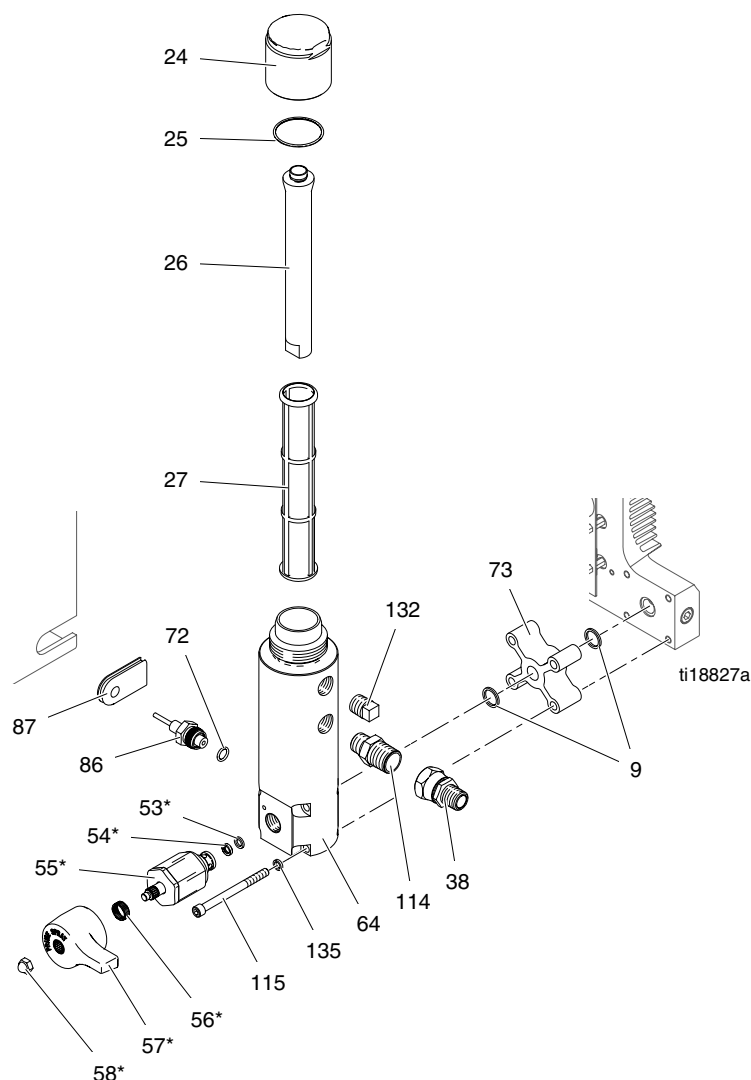
Parts - Control Box and Board



Ref.	Part	Description	Qty.	Ref.	Part	Description	Qty.
23	110963	SCREW, cap, flange head	2	96	287286	KIT, repair, display (includes 67, 113, 124, 127)	1
29	101754	PLUG, pipe	1	98	114391	SCREW, grounding	1
39	117625	NUT, locking	1	100	16M632	BOX, control, Mark X, domestic	1
60	116876	WASHER, flat	2	113	15K394	LABEL, control box cover, ultra	1
67	198648	LABEL, LCD	1	117	120184	FITTING, hydraulic	1
68	15X617	PANEL, control	1	119	15C973	GASKET	1
69	16D642	GASKET	1	121	15D527	SWITCH, rocker, 240V	1
70	15D036	GASKET, control box	1	122	116167	KNOB, potentiometer	1
71	16D640	GASKET, control	1	124	116252	SCREW, #10, taptite phil	4
74	120201	SCREW, mach, pan head	4	127		PAD, foam (included in 96)	1
75	16K149	GROMMET, motor lead	1	144▲	195833	LABEL, warning, ENG/FRE/SPA	1
76	117745	BUSHING, strain relief	1	146▲	15D523	LABEL,warning, domestic	1
77	15X902	LABEL, premium	1				
78	15R876	CORD, power	1				
82	256219	POTENTIOMETER, assembly	1				
95	16N278	CONTROL, board, blue, 50 amp, 230	1				

▲ Replacement warning labels are available at no cost.

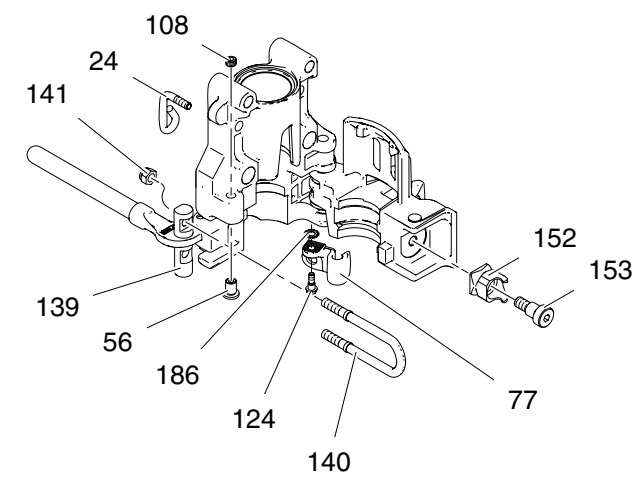
Parts - Filter Assembly



Ref.	Part	Description	Qty.	Ref.	Part	Description	Qty.
9	16M504	PACKING, square ring	2	58	116424	NUT, cap	1
24	15C765	CAP, filter	1	64	16M170	BASE, filter	1
25	117285	PACKING, o-ring	1	72	111457	PACKING, o-ring	1
26	15C766	TUBE, diffusion	1	73	16K165	SPACER, manifold	1
27	244071	FILTER, fluid 30 mesh	1	86	243222	TRANSDUCER, pressure control (includes 72)	1
	244067	FILTER, fluid 60 mesh, original equipment	1	87	15D033	GROMMET, transducer	1
	244068	FILTER, fluid 100 mesh	1	114	159239	FITTING, nipple, pipe, rdcg	1
	244069	FILTER, fluid 200 mesh	1	115	16M543	SCREW, cap, shc	4
38	162505	UNION, swivel	1	132	104813	PLUG, pipe	1
53	193710	SEAL, seat, valve	1	135	105510	WASHER, lock, spring (hi-collar)	4
54	193709	SEAT, valve	1				
55	287879	VALVE, drain, assy	1				
56	114708	SPRING, compression	1				
57	15G563	HANDLE, valve	1				

* 245103 Drain valve repair kit is available
(includes 53, 54, 55, 56, 57, 58).

Parts - Bearing Housing



Parts List - Bearing Housing

Ref.	Part	Description	Qty.
24	15F116	LATCH, handle	1
56	15F498	SCREW, adjustment	1
77	278204	CLIP, drain line	1
108	15F503	SCREW, set, socket	1
124	119250	SCREW, shoulder	1
139	15E625	PIN, housing, bearing	1
140	15G890	LATCH, bearing housing	1
141	111040	NUT, lock, insert, nylock, 5/16	2
152	15G584	RECEIVER, clamp	1
153	116942	SCREW, shoulder, skt hd	1
186	100985	WASHER, lock ext	1

Notes

This image shows a single sheet of white paper with horizontal ruling lines. The lines are evenly spaced and run across the width of the page. There are no margins, text, or other markings on the paper.

Graco Standard Warranty

Graco warrants all equipment referenced in this document which is manufactured by Graco and bearing its name to be free from defects in material and workmanship on the date of sale to the original purchaser for use. With the exception of any special, extended, or limited warranty published by Graco, Graco will, for a period of twelve months from the date of sale, repair or replace any part of the equipment determined by Graco to be defective. This warranty applies only when the equipment is installed, operated and maintained in accordance with Graco's written recommendations.

This warranty does not cover, and Graco shall not be liable for general wear and tear, or any malfunction, damage or wear caused by faulty installation, misapplication, abrasion, corrosion, inadequate or improper maintenance, negligence, accident, tampering, or substitution of non-Graco component parts. Nor shall Graco be liable for malfunction, damage or wear caused by the incompatibility of Graco equipment with structures, accessories, equipment or materials not supplied by Graco, or the improper design, manufacture, installation, operation or maintenance of structures, accessories, equipment or materials not supplied by Graco.

This warranty is conditioned upon the prepaid return of the equipment claimed to be defective to an authorized Graco distributor for verification of the claimed defect. If the claimed defect is verified, Graco will repair or replace free of charge any defective parts. The equipment will be returned to the original purchaser transportation prepaid. If inspection of the equipment does not disclose any defect in material or workmanship, repairs will be made at a reasonable charge, which charges may include the costs of parts, labor, and transportation.

THIS WARRANTY IS EXCLUSIVE, AND IS IN LIEU OF ANY OTHER WARRANTIES, EXPRESS OR IMPLIED, INCLUDING BUT NOT LIMITED TO WARRANTY OF MERCHANTABILITY OR WARRANTY OF FITNESS FOR A PARTICULAR PURPOSE.

Graco's sole obligation and buyer's sole remedy for any breach of warranty shall be as set forth above. The buyer agrees that no other remedy (including, but not limited to, incidental or consequential damages for lost profits, lost sales, injury to person or property, or any other incidental or consequential loss) shall be available. Any action for breach of warranty must be brought within two (2) years of the date of sale.

GRACO MAKES NO WARRANTY, AND DISCLAIMS ALL IMPLIED WARRANTIES OF MERCHANTABILITY AND FITNESS FOR A PARTICULAR PURPOSE, IN CONNECTION WITH ACCESSORIES, EQUIPMENT, MATERIALS OR COMPONENTS SOLD BUT NOT MANUFACTURED BY GRACO. These items sold, but not manufactured by Graco (such as electric motors, switches, hose, etc.), are subject to the warranty, if any, of their manufacturer. Graco will provide purchaser with reasonable assistance in making any claim for breach of these warranties.

In no event will Graco be liable for indirect, incidental, special or consequential damages resulting from Graco supplying equipment hereunder, or the furnishing, performance, or use of any products or other goods sold hereto, whether due to a breach of contract, breach of warranty, the negligence of Graco, or otherwise.

Graco Information

For the latest information about Graco products, visit www.graco.com.

TO PLACE AN ORDER, contact your Graco distributor or call 1-800-690-2894 to identify the nearest distributor.

*All written and visual data contained in this document reflects the latest product information available at the time of publication.
Graco reserves the right to make changes at any time without notice.*

For patent information, see www.graco.com/patents.

Original instructions. This manual contains English. MM 3A2577

Graco Headquarters: Minneapolis

International Offices: Belgium, China, Japan, Korea

GRACO INC. AND SUBSIDIARIES • P.O. BOX 1441 • MINNEAPOLIS MN 55440-1441 • USA

Copyright 2009, Graco Inc. All Graco manufacturing locations are registered to ISO 9001.

www.graco.com

Revision A - April 2012